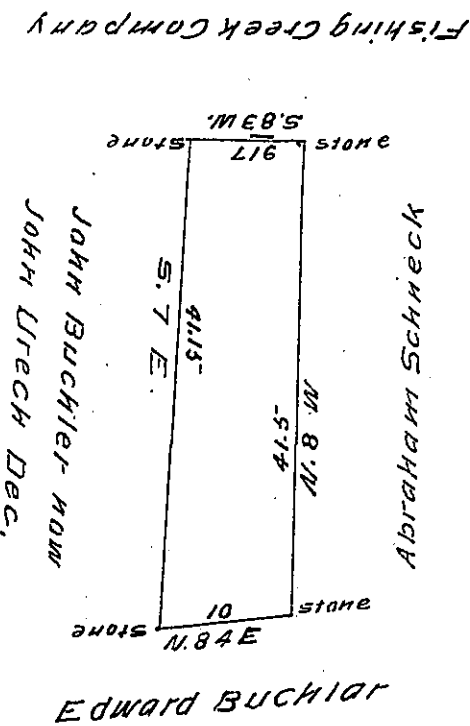


FORM NO 1.



Surveyed 13<sup>th</sup> September 1867 in pursuance of a Warrant dated 6 September 1867 granted to Solomon Klinger situate in Pinegrove Township Schuylkill County Pennsylvania containing two acres fifty perches and the allowance of six per cent for Roads &c

G. W. Matchin

J. M. Campbell Esq  
 Surveyor General of  
 Pennsylvania

County Surveyor

IN TESTIMONY that the above is a copy of the original remaining on file in the Department of Internal Affairs of Pennsylvania, made conformably to an Act of Assembly approved the 16th day of February, 1833, I have hereunto set my Hand and caused the Seal of said Department to be affixed at Harrisburg, this Eighteenth day of January 1908

Henry Howell

Secretary of Internal Affairs.